



WE'RE IN CONTROL

ASPHALT PUMP SKID AND COMPONENTS

Quality product. No excuses.



SYSTEMS Equipment Corp.

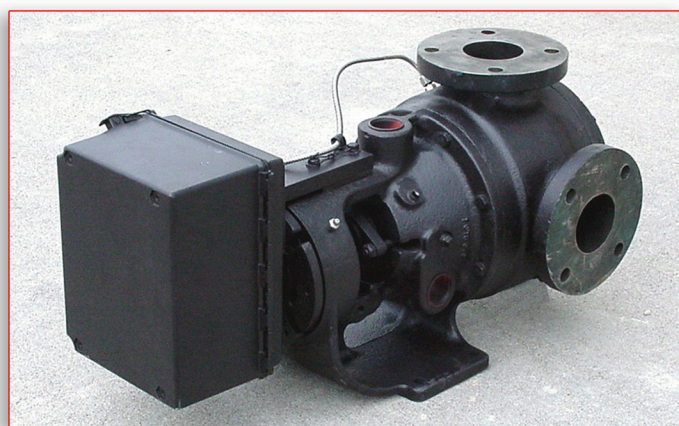
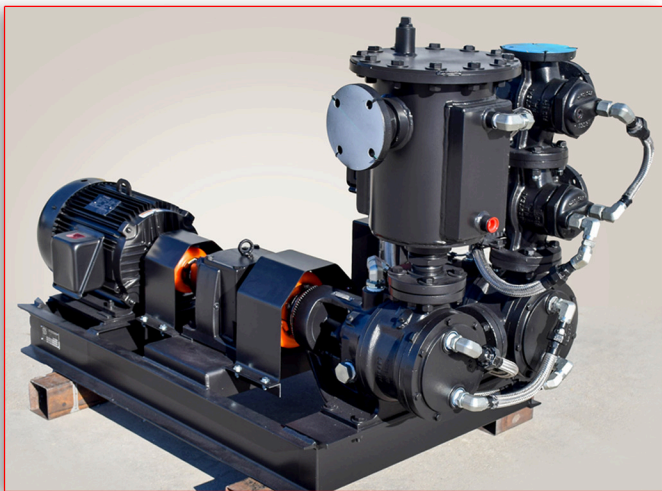
(563) 568-6387

www.systemsequipment.com

info@systemsequipment.com

Model APS-xxx Asphalt Pump Skid

- Variable speed direct drive volumetric pump skid with drive motor direct-coupled to Viking brand asphalt pump through a suitable gear reduction.
- Pump output directly proportional to pump speed.
- Low-speed operation maximizes component life.
- Available with sensorless vector VFAC or eddy current drive.
- Shown with optional meter, strainer and divert valves.

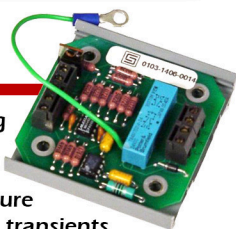


Model AM-xxx Liquid Asphalt Meter

- Accuracy better than $\pm 0.25\%$ over a turn-down ratio of greater than 10:1.
- Positive displacement internal tooth rotary meter; only two moving parts.
- Volumetric flow rate not affected by changes in source or delivery pressures, material temperature or viscosity.
- Hot oil jacketed head & bracket.
- Inlet & outlet ports at 90 degrees F.
- Suitable for service to 450 degrees F.
- Adjustable positive lock thrust control for accurate axial positioning & wear compensation.
- Non-contact high frequency pulse signal output useable with 8 to 24 volt excitation.
- Weather-resistant enclosure containing pickup probe & pickup wheel terminal block.

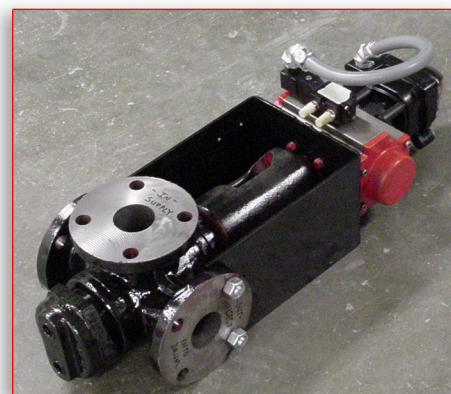
Optional AM-TS-A

- Temperature sensor & signal conditioning amplifier.
- SYSTEMS proprietary LIGHTNING QUICK DISCONNECT protects both the temperature and meter signals from lightning-induced transients of up to 1500 volts.



Model ADV-xx Automatic 3-Way Divert Valve

- Hot oil jacketed three-way valve with transflow port pattern to minimize flow-induced pressure spikes during valve transition.
- Double-acting pneumatic rack-and-pinion actuator – no dangerous external moving linkages.
- Actuating solenoid with full travel internal limit switches and visible position indicator.
- No-load operating time of less than 2 seconds for accurate asphalt weighed load calibrations.
- Safe operation possible down to 40 psi supply pressure.



PUMP SKID AND COMPONENTS

Asphalt pump skid, meter, divert and calibration valves, strainer, control panel and more.



Model AS200

Universal Liquid Asphalt Strainer

- 200 gpm/48 TPH rating.
- Hot oil jacketed on two sides.
- 10" diameter x 14" high liquid reservoir.
- Supplied with 3", 2.5", or 2" 4-bolt flanges.
- In one side/out the other or out the bottom if assembled to skid.
- Removable steel strainer basket with handle for easy removal. Strainer open area of greater than 16 times that of the area of a 3" pipe.
- 1" pipe fitting in cover for user's manual material thermometer.



Optional AC-3800

Manual Asphalt Control

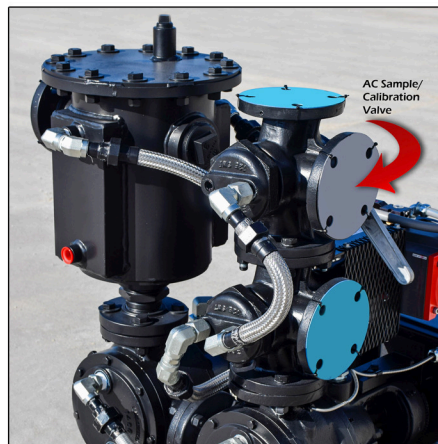
- Auto/Manual selector
- Manual rate control
- Manual Run/Divert control
- Inject indicator
- Volumetric rate meter



Model ACV-xx

Asphalt Calibration/Sample Valve

- Designed to enable user to calibrate or manually obtain AC sample.
- Installed on asphalt pump skid assembly.
- Hot-oil jacketed 3-way plug valve with transflow pattern to minimize flow-induced pressure spikes during valve transition.
- 1/4 turn wrench operated (included).



Request a Quote at (563) 568-6387 or info@systemsequipment.com

Nearly three decades in asphalt plant control



Our Engineering & Manufacturing Facilities

Systems Equipment Corporation has been manufacturing a complete line of controls and control-related components for the asphalt and aggregate industries since 1987.

Our staff includes electrical, mechanical, control, and software engineers with a working background in these industries.

Our products are in use worldwide. We sell through dealers, select original equipment manufacturers, and factory direct.

Telephone and on-site service is available direct from the factory or through our network of independent, reputation-based service representatives.



SYSTEMS Equipment Corporation • 903 Third Avenue SW • Waukon, IA 52172
(563) 568-6387 • VISIT for MORE INFO: www.systemsequipment.com