



WE'RE IN CONTROL

ADP-GUI

(Graphical User Interface)

Windows®-Based Asphalt Drum Mix Control

Quality product. No excuses.



SYSTEMS Equipment Corp.

(563) 568-6387

www.systemsequipment.com

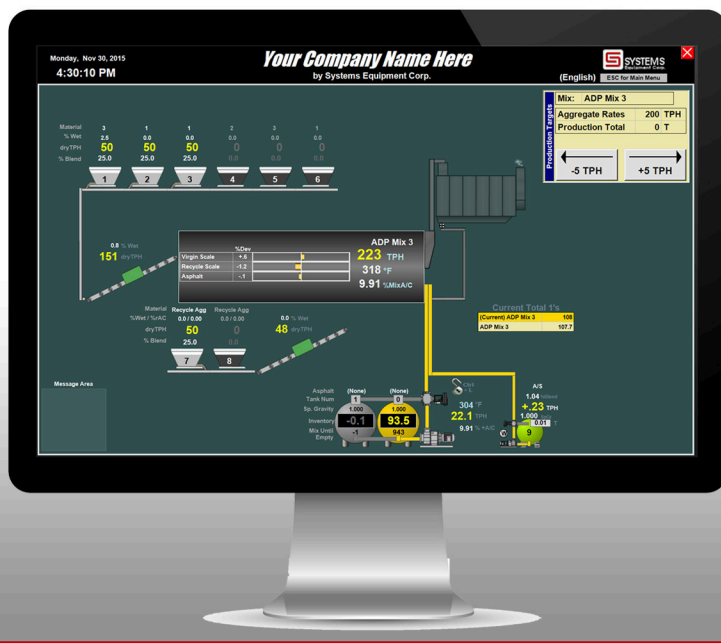
info@systemsequipment.com

ADP-GUI Windows®-Based Drum Mix Control

- Improved data recordation
- Proper time-sequencing of events
- Alarm and deviation annunciation
- Calibration simplification & quantification

The pairing of SYSTEMS' industry-acclaimed ADP-100 Drum Mix Computer with the ADP-GUI upgrade takes an industry standard and elevates it with next-level aesthetic and intellectual appeal. The GUI's graphics-based look and feel boasts a new level of user-friendliness, while features such as network and Internet connectivity and remote troubleshooting are among enhanced practical attributes. Highlights also include an SQL database that allows for massive quantities of mix formulas, material & asphalt names, calibrations for each material, and data retention. Full text names are used instead of numbers, and additional information can be saved with each entry type (mix formula, material, and asphalt.)

Let us tell you more!



During the design process, SYSTEMS carefully reviewed the features of the existing text-based ADP-100 and the requirements of this new graphics-based operator interface.

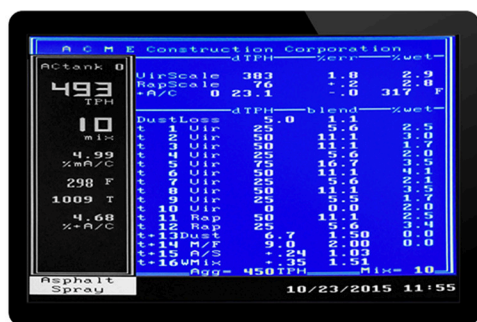
- Fact:** The existing ADP-100 is a time-tested product known for its accuracy, reliability, and ease of use. It is a proven product that has evolved with technology from its inception in 1987. New products almost always have associated startup problems. These problems have been resolved for the ADP-100.
- Fact:** The existing ADP-100 has a robust, flexible interface to the controlled equipment, meters, and sensors. Over the years, SYSTEMS has developed computer-to-equipment interconnects and control algorithms for all the various devices used in this industry. These interfaces are in place, proven and need not be replaced.
- Fact:** The existing ADP-100 uses a high-speed real-time operating system with rapid control response, superior measurement, and control accuracy. Obviously, all operating systems must run the asphalt plant. Simultaneously, the processor may need to process keyboard requests, print to printers, draw screens, etc. Today's desire for graphic-intensive displays, web-based connectivity, potential for integrated live video, audio annunciation, etc., places demands on the processor and leaves little time for control of the asphalt plant. Measurement and control accuracy demand that the operating system respond as if it is handling no other tasks. Control engineers call this real-time property 'determinism'. The existing ADP-100 is deterministic!

THE ADP-GUI SOLUTION

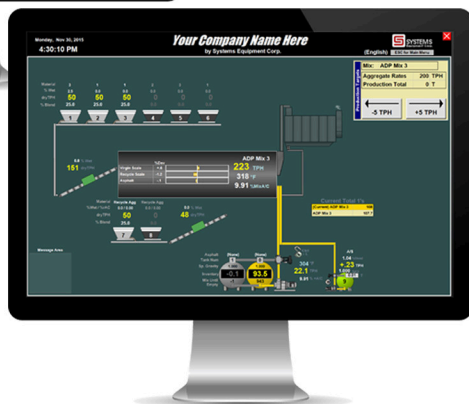
Provide a more flexible operator interface to replace the existing text-based data display and the keypad interface. Retain the existing and proven ADP-100 platform to connect with and control the plant equipment in real time. Use this Windows®-based interface to communicate with the operator and to manage and manipulate the measured and controlling data through a high-speed communication interface to the ADP-100 platform.

ADP-GUI (Graphical User Interface) Windows®-Based Asphalt Drum Mix Control

- **Advantage:** This design approach minimizes the amount of re-engineering required, thereby minimizing the potential for new product introduction problems for the end-user.
- **Advantage:** The user can optionally retain the ADP-100's original user interface as the perfect backup system. When the Windows® communication link is unplugged, the plant can be controlled through the original full-featured ADP-100 text-based interface and keypad using all of the existing ADP-100 display screens and procedures.
- **Advantage:** All existing ADP-100 customers can easily upgrade to the Windows®-based operating interface by installing a single high-speed communication link, changing the program chip to include that communication capability, and connecting the graphics PC and display.



Standard ADP-100
Text-Based Display
<<<



Windows®-Based
Graphical User
Interface Display
>>>

To request a quote, call (563) 568-6387 or
email info@systemsequipment.com

Building on the Best ADP-100 + GUI

Interface for ADP-100 offers graphic enhancement to SYSTEMS' trusted drum mix process automation

The ADP-GUI (Graphical User Interface) is a powerful partner to the ADP-100 computer system, offering enhanced visual and practical features to extend the data capabilities of the base ADP-100 Drum Mix Process Computer.

No difference in accuracy or precision is noticed because the ADP-100 computer still controls the plant.

What the GUI adds is an elevated level of user friendliness for making the operator's life less stressful. While the graphics display is the obvious product change, the real advantage to the interface is its ability to acquire, manage, manipulate, and share production data to enhance efficiency and profitability.

Nearly three decades in asphalt plant control



Our Engineering & Manufacturing Facilities

Systems Equipment Corporation has been manufacturing a complete line of controls and control-related components for the asphalt and aggregate industries since 1987.

Our staff includes electrical, mechanical, control, and software engineers with a working background in these industries.

Our products are in use worldwide. We sell through dealers, select original equipment manufacturers, and factory direct.

Telephone and on-site service is available direct from the factory or through our network of independent, reputation-based service representatives.



SYSTEMS Equipment Corporation • 903 Third Avenue SW • Waukon, IA 52172
(563) 568-6387 • VISIT for MORE INFO: www.systemsequipment.com