

Model APS-xx/yyEC Direct Drive Asphalt Pump Skid

Designed to accurately and reliably pump liquid asphalt over a wide range of delivery rates.

Standard Models:

Model	HP	TPH
APS-7.5/16EC	7.5	0-16
APS-10/26EC	10	0-26
APS-15/33EC	15	0-33
APS-15/42EC	15	0-42
APS-20/48EC	20	4-48
APS-20/60EC	20	5-60



- The asphalt pumping method described utilizes a fixed displacement pump operating only at the speed necessary to deliver the desired asphalt rate. With the components proposed, there is a very good correspondence between the actual asphalt pumping rate and the pump speed as indicated by the eddy current speed controller. This correspondence is so good that in some circumstances, when governing regulations allow, the pump can be used as the only asphalt metering device. For systems with an asphalt meter, the indicated pump motor speed may be considered as a backup operational mode or used to validate the observed meter output.
- Variable speed direct drive volumetric pump skid consisting of a drive motor direct coupled to a Viking brand asphalt pump through a suitable gear reduction unit for positive control of the asphalt pumping rate.
- Pump output is directly proportional to pump speed. Component life is maximized as the pump operates only at the speed necessary to deliver the proper amount of liquid. Cold startups can be safely accomplished by circulating at low rpm.
- The asphalt pump end plate is jacketed; no relief valve is used or required. No other hot oil jacketing or plumbing is provided.
- The pump is powered by a totally enclosed, fan cooled, constant speed, 460 volt 3 phase 60 hertz electric motor driving a variable speed eddy current clutch. Eddy current drives are simple devices, both electrically and mechanically, and provide excellent control of the asphalt delivery rate and do not generate any electrical interference that may affect other components, especially scales. These drives meet all of the FCC Part 15 Class A and Class B requirements without the need for line filters, capacitors or chokes.
- The Eddy Current controller card is supplied loose for installation by others.
- *No control panel mounted On/Off, Forward/Reverse, or rate control operators are included.*
- *A suitable external full voltage reversing starter is required with this drive and is not included as part of this quotation. In retrofit applications, this starter is often available and can often be used 'as is'.*

Model APS-5/9/DC Direct Drive Asphalt Pump Skid

Designed to accurately and reliably pump liquid asphalt over a wide range of delivery rates.

Standard Models:

Model	HP	TPH
APS-5/7DC	5	0.4-7
APS-5/9DC	5	0.4-9
APS-5/11DC	5	0.5-11
APS-5/13DC	5	0.7-13



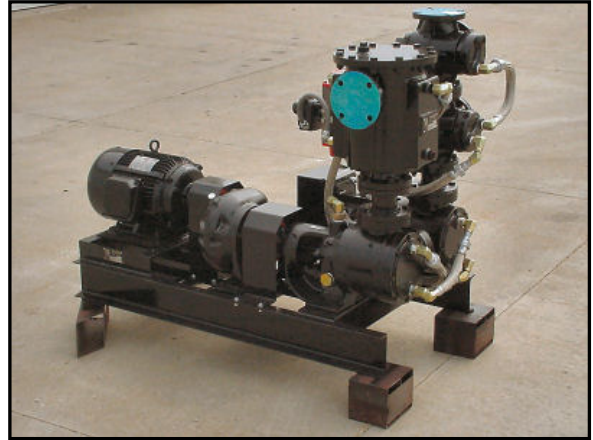
- The asphalt pumping method described utilizes a fixed displacement pump operating only at the speed necessary to deliver the desired asphalt rate. With the components proposed, there is a very good correspondence between the actual asphalt pumping rate and the pump speed as indicated by the eddy current speed controller. This correspondence is so good that in some circumstances, when governing regulations allow, the pump can be used as the only asphalt metering device. For systems with an asphalt meter, the indicated pump motor speed may be considered as a backup operational mode or used to validate the observed meter output.
- Variable speed direct drive volumetric pump skid consisting of a drive motor direct coupled to a Viking brand asphalt pump through a suitable gear reduction unit for positive control of the asphalt pumping rate.
- Pump output is directly proportional to pump speed. Component life is maximized as the pump operates only at the speed necessary to deliver the proper amount of liquid. Cold startups can be safely accomplished by circulating at low rpm.
- The asphalt pump end plate is jacketed; no relief valve is used or required. No other hot oil jacketing or plumbing is provided.
- The pump is powered by a totally enclosed, fan cooled, variable speed, 180-volt Direct Current electric motor. DC drives are simple devices, both electrically and mechanically, and provide excellent control of the asphalt delivery rate and do not generate any electrical interference that may affect other components, especially scales.
- A KB brand model KBRG-255 DC controller card is supplied loose for installation by others. This controller is easily connected to the computer for controlled variable speed in the forward direction. A momentary switch allows the pump to run in reverse for cleanout.
- *No manual control panel, On/Off, Forward/Reverse, or rate control operators are included.*
- *When purchased with the asphalt meter, the meter will be installed on the pump and all hot oil plumbing between the skid and meter will be installed.*

Model APS-xx/yyVFAC Direct Drive Asphalt Pump Skid

Designed to accurately and reliably pump liquid asphalt over a wide range of delivery rates.

Standard Models:

Model	HP	TPH
APS-5/13VFAC	5	1-13
APS-7.5/17VFAC	7.5	2-17
APS-10/17VFAC	10	2-17
APS-10/29VFAC	10	3-29
APS-15/30VFAC	15	3-30
APS-15/45VFAC	15	4-45
APS-20/45VFAC	20	4-45
APS-20/54VFAC	20	5-54
APS-25/66VFAC	25	6-66



- The asphalt pumping method described utilizes a fixed displacement pump operating only at the speed necessary to deliver the desired asphalt rate. With the components proposed, there is a very good correspondence between the actual asphalt pumping rate and the pump speed as indicated by the VFAC drive. This correspondence is so good that in some circumstances, when governing regulations allow, the pump can be used as the only asphalt metering device. For systems with an asphalt meter, the indicated pump motor speed may be considered as a backup operational mode or used to validate the observed meter output.
- Variable speed direct drive volumetric pump skid consisting of a drive motor direct coupled to a Viking brand asphalt pump through a suitable gear reduction unit for positive control of the asphalt pumping rate.
- Pump output is directly proportional to pump speed. Component life is maximized as the pump operates only at the speed necessary to deliver the proper amount of liquid. Cold startups can be safely accomplished by circulating at low rpm.
- The asphalt pump end plate is jacketed; no relief valve is used or required. No other hot oil jacketing or plumbing is provided.
- The pump is powered by a totally enclosed fan cooled 460-volt, 3 phase, 60 hertz electric motor rated for inverter duty. Inverter rated insulation protects against the voltage spikes induced by the normal operation of VFAC drives.
- *Optional* VFAC drive uses sensorless vector control technology to provide high torque at all operating speeds. Auto tuning matches the drive to the motor for ultimate performance and precise speed control.
- *Optional* VFAC drive can be installed in a NEMA 4 rated enclosure of sufficient size to dissipate the heat through both condensation and radiation.
- *Optional* A 460-volt three-phase inverter drive rated isolation transformer is supplied loose for installation by others. This transformer does not allow electrical interference from the drive to be reflected back on the power lines.

Products are sold subject to SYSTEM Equipment's current Warranty, Terms, & Conditions.