

## Model CCSL-1236 Split Level Control Center

*(Pictured with optional portability package.)*



Designed specifically for the asphalt industry with attention to rugged construction, operator comfort and safe and logical integration of the plant controls and switchgear.

### Structure.....

- 11'-10" wide x 36'-0" long x 12'-3" high single level two room control center. Separate motor control room for all switchgear. Safe exit from operators control room.
- Operator's room is 11'-2" wide x 15'-2" long. Switchgear room is 11'-2" wide x 19'-8" long.
- All steel welded frame construction including wall supports, floor and ceiling joists. All steel is prime coated and exposed steel finish painted.
- White vertical pattern steel siding with black trim. Custom colors available upon request. Pre-painted high tensile steel siding offers maximum strength and resistance to wind damage with a minimum of potential maintenance. Monocoque wall construction utilizes the exterior steel siding as a strength member.
- 1-piece, no maintenance, black rubber roof, bonded to ¾" T&G plywood screwed to steel ceiling joists.
- Ceiling cavity is filled with 6" of fiberglass insulation (R19). Suspended 24 inch square, textured, acoustical ceiling panels with 4-tube, recessed, fluorescent light fixtures.
- Sidewalls are insulated with R8 rigid insulation installed to minimize heat loss/gain and sound transmission. Insulation provides 100% backing to both the exterior and interior panels. All insulation joints are caulked to prevent the entry of wind driven dust.
- 3/8" thick wood grain interior paneling.
- 360 degree visibility from operator room with 180 square feet of slanted, tinted, double pane insulating tempered glass. Side windows slope approximately 2" from top to bottom. Front windows slope approximately 4" from top to bottom.
- Floor construction is a sandwich of ½" exterior plywood, 3 ½" R11 fiberglass insulation with 2x4 stringers on 16" centers, and ¾" T&G plywood sub floor screwed to steel tube joists.
- Easy maintenance 12 inch square vinyl composition tile floor.
- 36"x 80" heavy duty, steel, insulated entrance door with keyed lockset and hydraulic style door closer. A tinted, double pane window in the door is optionally available.

**Heating, Ventilating, and Air Conditioning.....**

- Air conditioner/heater with 4 Ton cooling capacity and 20 kW heating capacity. A split air conditioner system is provided for universal serviceability. The compressor unit is mounted to the end of the structure, connected, and ready for operation. The air handler is mounted in the basement crawl section. For maximum operator comfort, low velocity conditioned air is supplied through a full width diffuser located just under the front window in the operators control room and returns to the air handler through the lower section.
- Air conditioner is provided with low ambient control for operation to outside temperatures of 0° F.
- Wall mounted thermostat in operator's area.

**Electrical.....**

- All wiring will be to the guidelines established by the National Electrical Code. All wiring for outlets and lights will be in conduit.
- Integral metal wireway with removable covers provided along end wall of switchgear room, and along both full-length sidewalls of the structure. This concept provides excellent access to motor control center and interconnect wiring to control room and consoles.
- Distribution circuit panel, 200 amp, 42 circuit with a main breaker.
- An exterior shelf for mounting the 120/240 volt transformer(s) is provided. This is the safest mounting location, removes any transformer noise from the operator's area and does not utilize floor space in the control center. This location is designed to allow easy wiring access to the integral wireway.

 **NOTE**

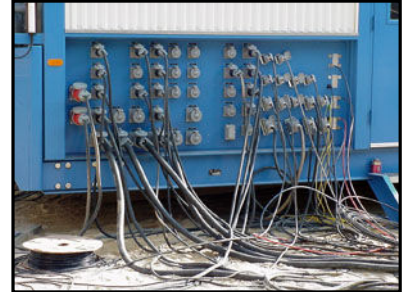
Contact SYSTEMS if the MCC to be installed is larger than 1000 amps.

**Available Options.....**

- Manufactured basement sections, fully insulated and conditioned, shell only, or post only.
- Ticket pass, deal drawers or air delivery systems.
- Fifth wheel air ride portability.
- Countertops and consoles.
- Track lighting. Red night operation lighting. Exterior security lights.
- 480/240/120 volt single phase distribution transformer.
- Additional distribution circuit panel(s) (with or without main breaker).

### Quick Disconnect Panel

- Recessed quick disconnect panel with integral, all steel, wireway to MCC. Removable covers allow easy access to the rear of this panel from the inside of the control center. Quick disconnects are not included.
- The picture of the QD panel shows one mounted to the side of the control center. More often a panel such as shown is located across the end of the control center directly under the 5th wheel gooseneck. This arrangement allows for the most efficient floor plan for the MCC room.



### Portability Package

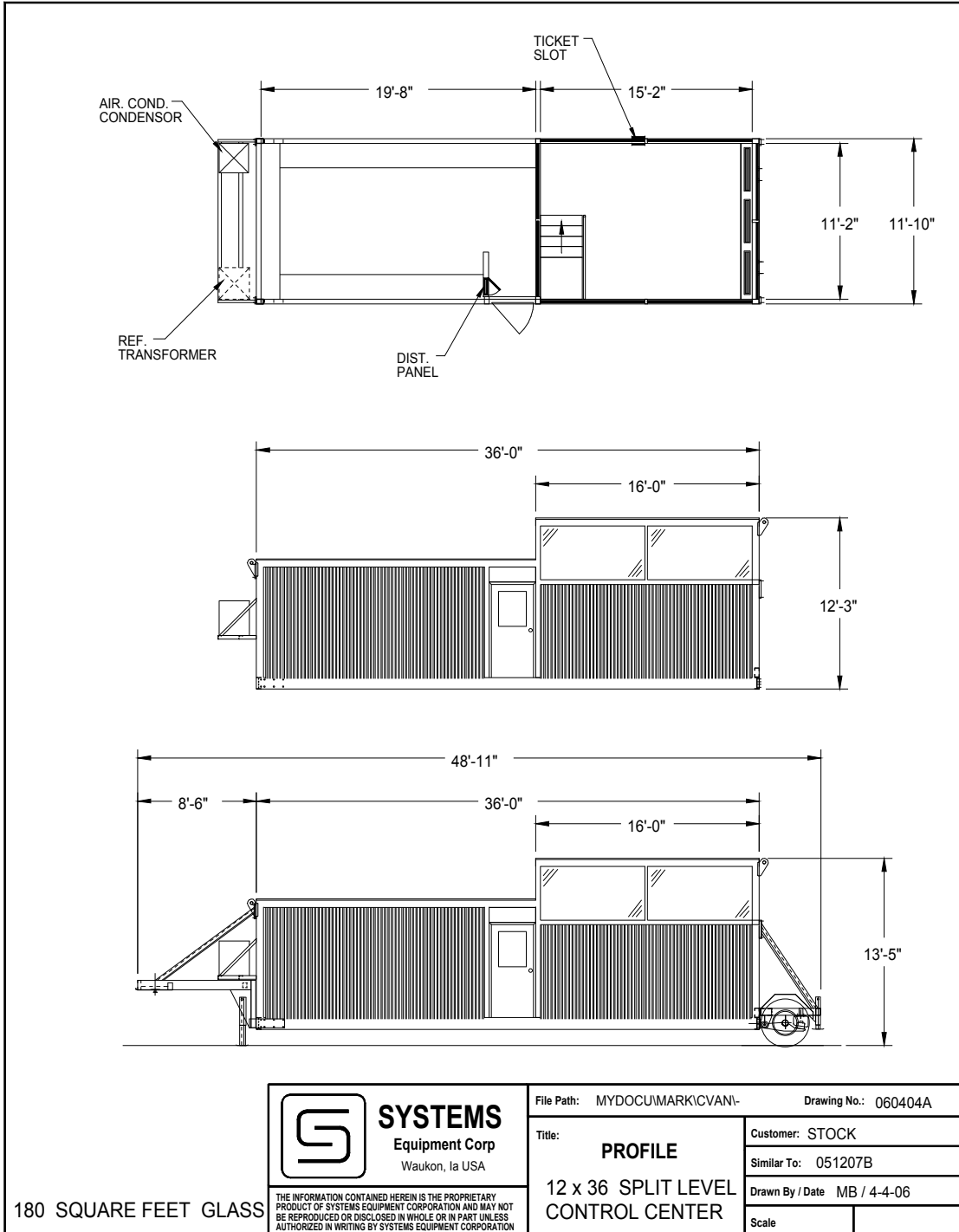
- Single axle portability package includes dual wheels on 20,000 pound air ride suspension.
- Standard fifth wheel pin at 48" height.
- Standard lighting and air brake connections and anti-sail mud flaps.
- Four (4) independent single crank landing jacks.
- Removable entrance step.



*Products are sold subject to SYSTEMS Equipment's current Warranty, Terms, & Conditions.*

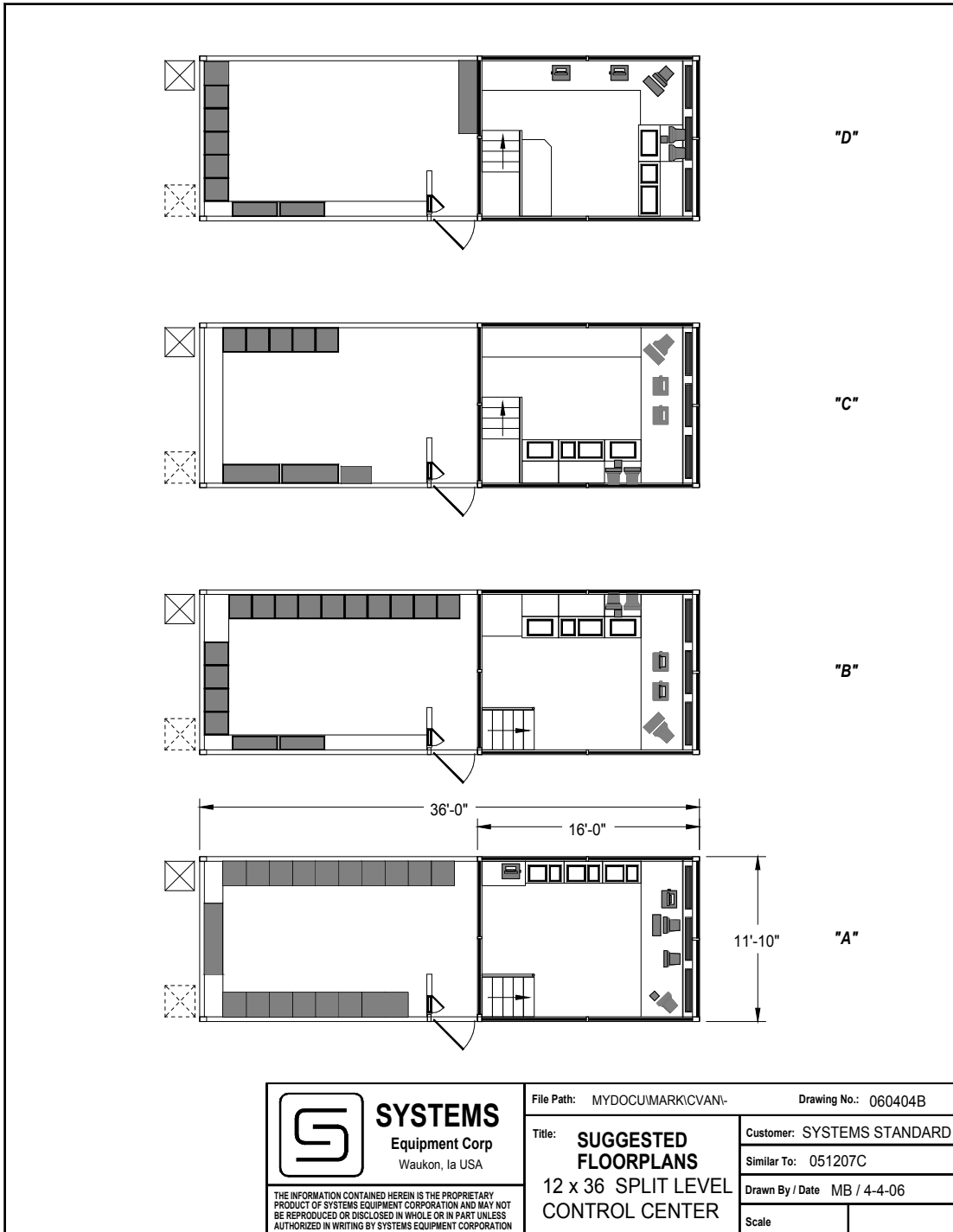



**SYSTEMS**  
Equipment Corporation





**SYSTEMS**  
Equipment Corporation



 <p><b>SYSTEMS</b> Equipment Corp Waukon, Ia USA</p> <p><small>THE INFORMATION CONTAINED HEREIN IS THE PROPRIETARY PRODUCT OF SYSTEMS EQUIPMENT CORPORATION AND MAY NOT BE REPRODUCED OR DISCLOSED IN WHOLE OR IN PART UNLESS AUTHORIZED IN WRITING BY SYSTEMS EQUIPMENT CORPORATION</small></p>	File Path: MYDOC\MARKICVANI-	Drawing No.: 060404B
	Title: <b>SUGGESTED FLOORPLANS</b>	Customer: SYSTEMS STANDARD
	12 x 36 SPLIT LEVEL CONTROL CENTER	Similar To: 051207C
		Drawn By / Date MB / 4-4-06
	Scale	