

Model CC1L-1028 Single Level Control Center

(Pictured with optional portability package.)



Designed specifically for the asphalt industry with attention to rugged construction, operator comfort and safe and logical integration of the plant controls and switchgear.

Structure.....

- 10'-0" wide x 28'-0" long x 9'-4" high single level two room control center. Separate motor control room for all switchgear. Safe exit from operators control room.
- Operator's room is 9'-4" wide x 14'-10" long. Switchgear room is 9'-4" wide x 12'-0" long.
- All steel welded frame construction including floor and ceiling joists. All steel is prime coated and exposed steel finish painted.
- White vertical pattern steel siding with black trim. Custom colors available upon request. Prepainted high tensile steel siding offers maximum strength and resistance to wind damage with a minimum of potential maintenance. Monocoque wall construction utilizes the exterior steel siding as a strength member.
- 1-piece, no maintenance, black rubber roof, bonded to 3/4" T&G plywood screwed to steel ceiling joists.
- Ceiling cavity is filled with 6" of fiberglass insulation (R19). Suspended 24 inch square, textured, acoustical ceiling panels with 4-tube, recessed, fluorescent light fixtures.
- Sidewalls are insulated with R8 rigid insulation installed to minimize heat loss/gain and sound transmission. Insulation provides 100% backing to both the exterior and interior panels. All insulation joints are caulked to prevent the entry of wind driven dust.
- 3/8" thick woodgrain interior paneling.
- 270 degree visibility from operator room with 137 square feet of slanted, tinted, double pane insulating tempered glass. Side windows slope approximately 2" from top to bottom. Front windows slope approximately 4" from top to bottom.
- Floor construction is a sandwich of 1/2" exterior plywood, 3 1/2" fiberglass insulation (R11) with 2x4 stringers on 16" centers, and 3/4" T&G plywood sub floor screwed to steel tube joists.
- Easy maintenance 12 inch square vinyl composition tile floor.
- 36"x 80" heavy duty, steel clad, insulated entrance door with keyed lockset and chain style door stop. A tinted, double pane window in the door is provided.

Heating, Ventilating, and Air Conditioning.....

- Air conditioner/heater with 3 ton cooling capacity and 10 kW heating capacity. A split air conditioner system is provided for universal serviceability. The compressor unit is mounted to the end of the structure, connected, and ready for operation.
- Air conditioner is provided with low ambient control for operation to outside temperatures of 0° F.
- Wall mounted thermostat in operator's area.

Electrical.....

- All wiring will be to the guidelines established by the National Electrical Code. All wiring for outlets and lights will be in conduit.
- Integral metal wireway with removable covers provided along end wall of switchgear room, and along both full-length sidewalls of the structure. This concept provides excellent access to motor control center and interconnect wiring to control room and consoles.
- Distribution circuit panel, 100 Amps, 22 circuits with main breaker.
- An exterior shelf for mounting the 120/240 volt transformer(s) is provided. This is the safest mounting location, removes any transformer noise from the operator's area and does not utilize floor space in the control center.

 **NOTE**

Contact SYSTEMS if the MCC to be installed is larger than 1000 amps.

Available Options.....

- Manufactured basement sections, fully insulated and conditioned, shell only, or post only.
- 5th wheel air ride portability.
- Exterior entrance platform and steps with handrail.
- Countertops and consoles.
- Track lighting. Red night operation lighting. Exterior security lights.
- Ticket slot, ticket pass, deal drawers or air delivery systems.
- 480/240/120 volt single phase distribution transformer.
- Additional distribution circuit panel(s) (with or without main breaker).

Optional Quick Disconnect Mounting Panel

- An exterior shelf (above power quick disconnect panel) for mounting the 120/240 volt transformer(s) is provided. This is the safest mounting location, removes any transformer noise from the operator's area, and does not utilize floor space in the MCC room. This location is designed to allow easy wiring access to the integral wireways. Transformer is not included.
- Recessed quick disconnect panel with integral, all steel, wireway to MCC. Removable covers allows easy access to the rear of this panel from the inside of the control center.
- Quick disconnects are not included.



Optional Portability Package

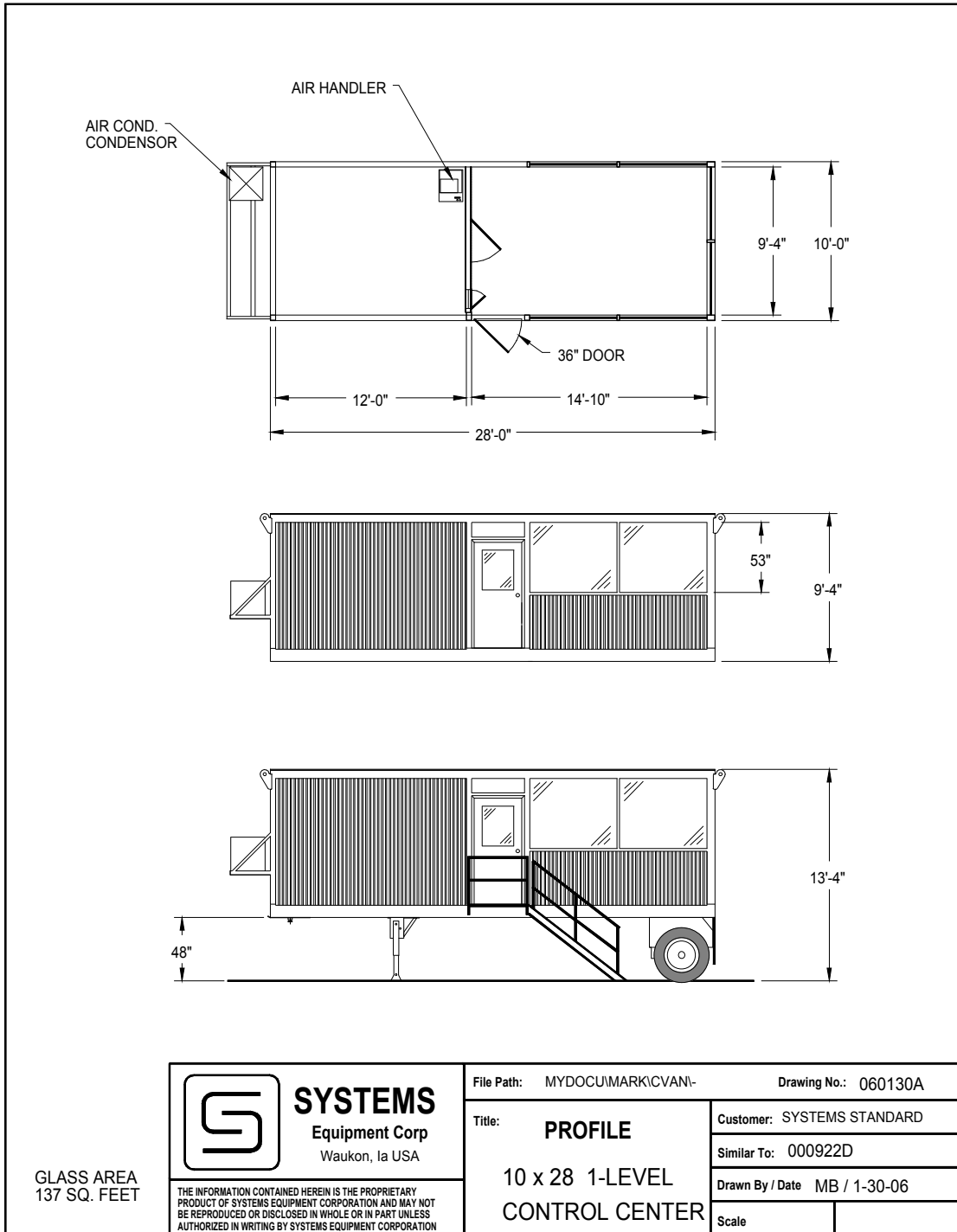
- Single axle portability package includes dual wheels on 20,000 pound air ride suspension.
- Standard fifth wheel pin at 48" height.
- Standard lighting and air brake connections and anti-sail mud flaps.
- Single crank landing gear.
- Platform and entrance steps with single handrail and transport storage rack.



Products are sold subject to SYSTEMS Equipment's current Warranty, Terms, & Conditions.

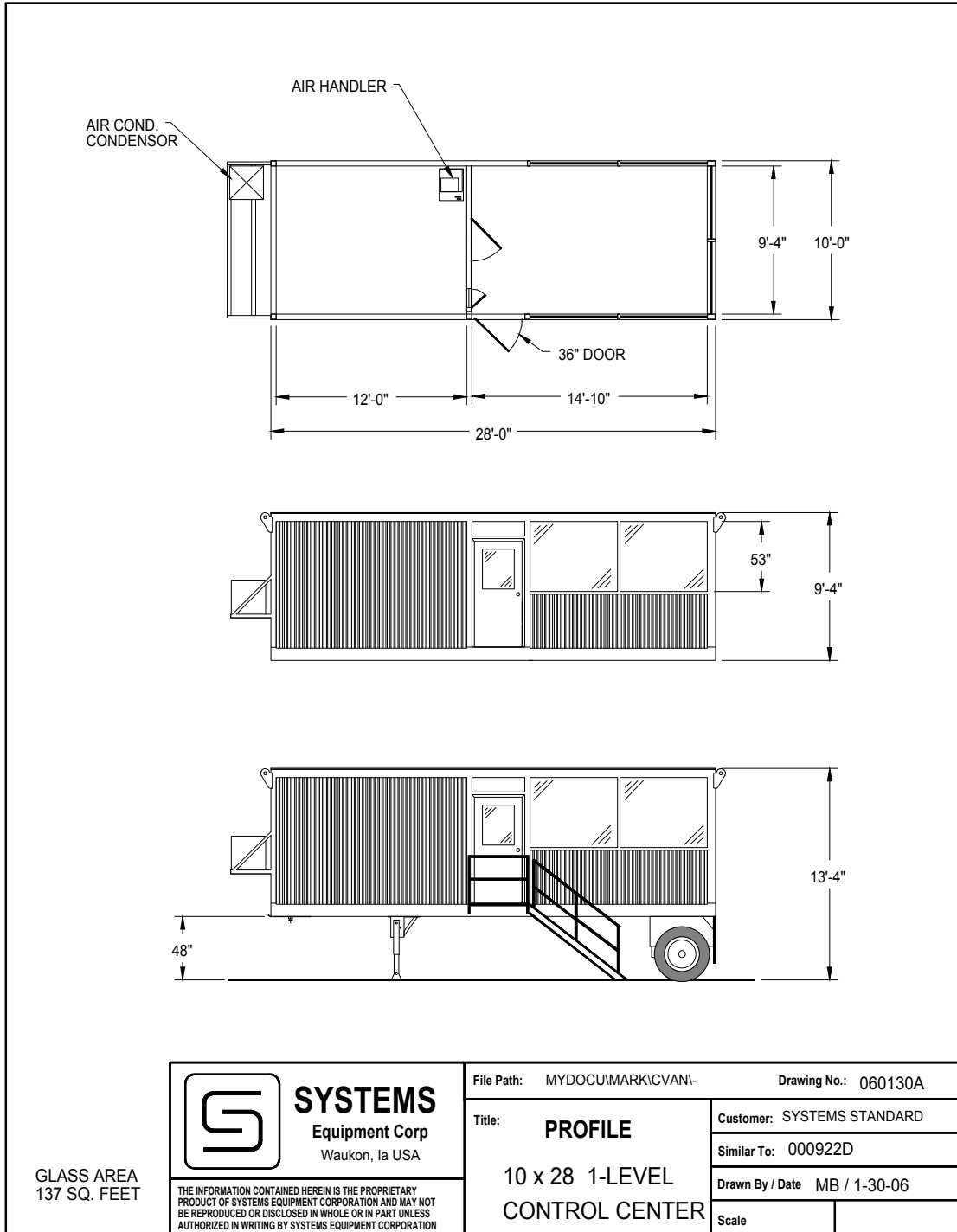


SYSTEMS
Equipment Corporation





SYSTEMS
Equipment Corporation



GLASS AREA
137 SQ. FEET

<p>SYSTEMS Equipment Corp Waukon, Ia USA</p>	<p>File Path: MYDOCUMARKICVAN-</p>	<p>Drawing No.: 060130A</p>
	<p>Title: PROFILE</p>	<p>Customer: SYSTEMS STANDARD</p>
<p>THE INFORMATION CONTAINED HEREIN IS THE PROPRIETARY PRODUCT OF SYSTEMS EQUIPMENT CORPORATION AND MAY NOT BE REPRODUCED OR DISCLOSED IN WHOLE OR IN PART UNLESS AUTHORIZED IN WRITING BY SYSTEMS EQUIPMENT CORPORATION</p>	<p>10 x 28 1-LEVEL</p>	<p>Similar To: 000922D</p>
	<p>CONTROL CENTER</p>	<p>Drawn By / Date MB / 1-30-06</p>
	<p>Scale</p>	